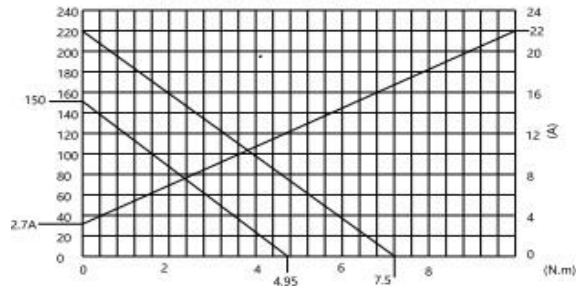


## MOTOR CURVE CHARACTERISTICS

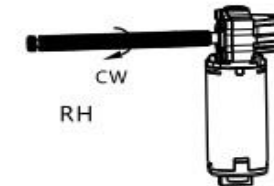
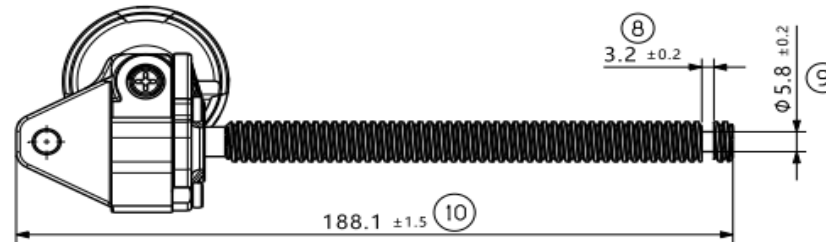
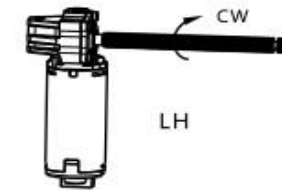
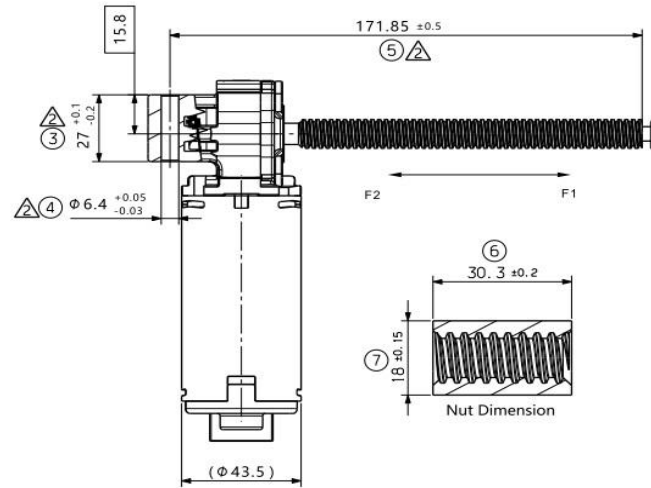
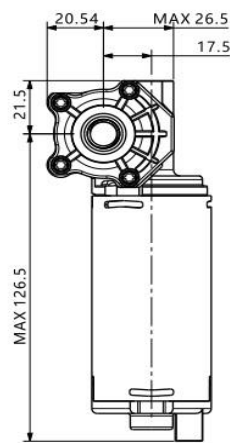
Measured with:  
 Harness resistor: 0.1 ohm  
 Voltage: 13.5±0.1V  
 Temperature: room temperature 23±5°C



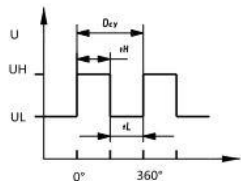
Lead Screw	Parameter
type of thread	right
number of starts	1
major DIA	11.7(+0.05/-0.1)
minor DIA	8.863(+0.05/-0.1)
pitch DIA	10.312±0.04
axial pitch	3.175
pressure angle	20°
lead error max	0.1%
pitch DIA over 3 DIA wires(Φ1.681±0.001)	12.66±0.04

### General notes

- Motor specification
- Ultimate strength: F>16KN when pulling (F1) and pushing (F2), test speed 250mm/min;
- Sound pressure level: the tip of the microphone is placed 50±2cm beside the center of gear housing Lp≤42dB(A); temperature range -40°C to +85°C;
- Pitch of screw: 3.175mm
- Comply with directive 2000/53/EC article 4, paragraph 2a (certificate needed);



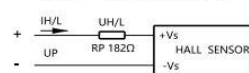
## SENSOR PERIOD



tH = dcy 50%±8%  
 tL = dcy 50%±8%

## SENSOR TEST

### CIRCUIT TEST FOR SENSOR

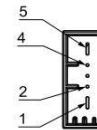


IC DATA  
 UB=13.5±0.05V  
 RP=182 ohm±1%  
 8.0VsUL≤9.2V  
 11.8VsUH≤13.2V

## SENSOR DATA

Operating voltage range: UP 3.8-16V  
 Current consumption < 25mA  
 Temperature range: -40°C +85°C  
 Reverse polarity protection: -30V  
 Output leakage current: < 10 microA  
 Magnet: 2 poles

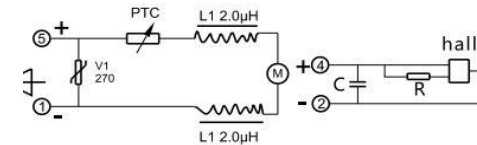
## CONNECTOR AND ROTATION



Type	Pin 1	Pin 5	Direction
	+	-	CW

Connector definition  
 -TYCO Type MQS:2-4  
 -TYCO Type MPQ:1-5  
 Mating connector  
 Housing: TYCO ref 1379217-1  
 Cover: TYCO ref 1379218-1

## MOTOR AND SENSOR CIRCUIT



**EISSES**  
 Aandrijftechniek

EAT 405260 (LH VERSION)  
 EAT 405261 (RH VERSION)  
 GMPS 12V 150 OMW/MIN 2KAN